



CAMPBELL + VAN DUSEN
ARCHITECTURE INTERIOR DESIGN

www.CVDstudio.com

CAMPBELL + VAN DUSEN Design Studio, LLC
255 South Orange Avenue Suite #1240
Orlando, Florida 32801
Phone: 407.930.6016
FL Lic. No. AA26003339

CAMPBELL + VAN DUSEN Design Studio, LLC
255 South Orange Avenue Suite #1240
Orlando, Florida 32801
Phone: 407.930.6016
FL Lic. No. AA26003339

Figure 10 consists of four cross-sectional diagrams of U-shaped precast concrete lintels, labeled L1, L2, L3, and L4. Each diagram shows the internal reinforcement and concrete structure.

- L1:** Dimensions: 8" total height, 2 1/2" top flange height, 16" total width. Labels: "U-SHAPED PRECAST CONCRETE LINTEL", "VERT. REINF. SEE FOUNDATION PLAN NOTES.", "(1) #5 CONT.", "L1 (8F&11T)".
- L2:** Dimensions: 16" total height, 2 1/2" top flange height, 16" total width. Labels: "U-SHAPED PRECAST CONCRETE LINTEL", "VERT. REINF. SEE FOUNDATION PLAN NOTES.", "(1) #5 CONT.", "L2 (8F&11T)".
- L3:** Dimensions: 24" total height, 2 1/2" top flange height, 16" total width. Labels: "U-SHAPED PRECAST CONCRETE LINTEL", "VERT. REINF. SEE FOUNDATION PLAN NOTES.", "(1) #5 CONT.", "L3 (8F&11B/T)".
- L4:** Dimensions: 32" total height, 2 1/2" top flange height, 16" total width. Labels: "U-SHAPED PRECAST CONCRETE LINTEL", "VERT. REINF. SEE FOUNDATION PLAN NOTES.", "(1) #5 CONT.", "L4 (8F&11B/T)".

- NOTES:**
1. 8" PRECAST LINTELS BY CASTCRETE CORPORATION OR APPROVED EQUAL.
 2. SHORE PRECAST LINTEL PER MANUFACTURER RECOMMENDATIONS.
 3. SEE THE ARCHITECTURAL DRAWINGS FOR SIZE AND LOCATION OF ALL OPENINGS.
 4. PROVIDE 4" MINIMUM BEARING EACH END.

MARK	SIZE	REINFORCING
WF-1	2'-0" X 12" X CONT.	(3) #5 CONT. BOTTOM AND #5 @ 14" O.C. TRANSV. BOTTOM
F70	7'-0" X 7'-0" X 18"	(8) #6 E.W. BOTTOM

(ALL LOADS SHOWN ARE IN POUNDS PER SQ. FT.)

COMPONENT	AREA			
	ROOF	SUB ON GRADE		
SYSTEM	10			
CEILING & MECHL	15			
MISC.	5			
RAIN LOAD	25			
TOTAL DEAD LOAD	30			
TOTAL LIVE LOAD	20	100		
TOTAL LOAD	55	100		

USE 5PSF DEAD LOAD FOR NET UPLIFT CALCULATIONS.

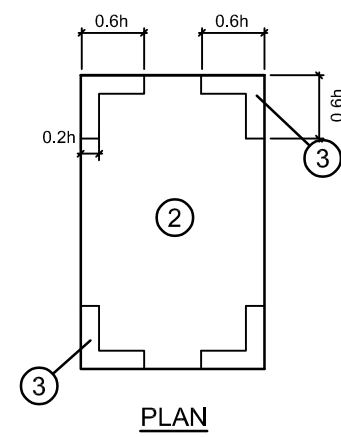
USE 5PSF DEAD LOAD FOR NET UPLIFT CALCULATIONS.

MARK	SIZE	BASE P _L	A.B.	EMBED
SC1	HSS 6 x 6 x 1/4"	12x12x1"	(4) 3/4"Ø	12"

MARK	SIZE BxH (inches)	REINFORCING			STIRRUPS
		BOTT	TOP	INT	
BB1	8x8	(1) #5	-	-	MASONRY BOND BEAM
BB2	8x16	(1) #5	(1) #5	-	MASONRY BOND BEAM
TB1	8x16	(2) #5	(2) #5	-	#3 @ 6" O.C.
CB1	8x32	(2) #5	(2) #5	(6) #5	#3 @ 6" O.C.
CB2	8x16	(2) #5	(2) #5	(4) #5	#3 @ 6" O.C.
CB3	8x16	(2) #5	(2) #5	(2) #5	#3 @ 6" O.C.

EFFECTIVE WIND AREA (SQ. FT.)	ROOF AREA			
	1'	1	2	3
ALL	NA	NA	+15,42/-34.7	+16,1/37,1

1. (Vasd) = ALLOWABLE WIND LOADS
2. Kd = 1.0
3. +: INDICATES WIND PRESSURE
-: INDICATES WIND SUCTION
4. h = 14.0 FT (ROOF)
0.6h = 8.4 FT
0.6h = 2.8 FT
(COMPONENTS AND CLADDING)



SIZE OF WALL OPENING (SQ. FT.)	WALL AREA	
	4	5
10	+16.1/-17.5	+16.1/-21.5
20	+15.4/-16.8	+15.4/-20.1
50	+14.5/-16.8	+14.5/-18.2
100	+13.8/-15.1	+13.8/-16.8

MARK	THICKNESS	REINFORCING
MW1	8" CMU	#5 @ 48" O.C.
MW2	8" CMU	#5 @ 16" O.C.
MW3	8" CMU	#5 @ 8" O.C.

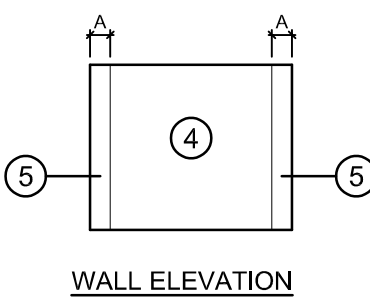
MASONRY WALL NOTES:

1. WALL SEGMENTS SHALL BE REINFORCED WITH 9 GA. GALVANIZED LATERAL REINFORCING @ 16" O.C. HORIZ. EXTEND REINFORCING 6" INTO POURED ELEMENTS AND AROUND ENCASED STEEL.
2. ADJACENT TO ANY EXTERIOR/INTERIOR 8" WALL OPENING, PLACE (1) #5 VERTICAL (ONE PER CELL) IN CELL GROUTED SOLID, FULL HEIGHT, U.N.O.
3. ALL MASONRY REINFORCED CELLS SHALL BE FILLED WITH 3000 PSI GROUT MIX.

1. +: INDICATES WIND PRESSURE
-: INDICATES WIND SUCTION

2. WALL DISTANCE A = 3.0 FT
(COMPONENTS AND CLADDING)

3. FOR WALL OPENINGS BETWEEN THOSE
GIVEN ABOVE THE LOAD MAY BE
INTERPOLATED, OTHERWISE USE THE
LOAD ASSOCIATED WITH THE LOWER
WALL OPENING AREA.



C1
(6) #5 VERTICAL
W/ #3 @ 8" O.C. TIES

CONCRETE COLUMN SCHEDULE

SEAL



GUTHERMAN STRUCTURAL INC.
130 CROWN OAK CENTRE DRIVE
LONGWOOD, FL 32750
P: 407.951.8065
LIC. # 28863

COPY OF THIS PLAN IS NOT VALID UNLESS SIGNED,
SEALED AND DATED BY THE ENGINEER OF RECORD.
CONSULTANT SEAL

PROJECT DESCRIPTION:
A NEW OFFICE BUILDING
PROVIDENCE ONE
BUILDING - 01
1145 BUSINESS CENTER DRIVE
HEATHROW, FLORIDA. 32746

ISSUE FOR

CONSTRUCTION

10.21.2025

[illegible]

PROJECT TEAM _____

PRINCIPAL IN CHARGE
J. GUTHERMAN
PROJECT MANAGER

CLIENT NAME

Providence One Partners

PROJECT NUMBER

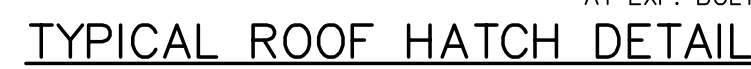
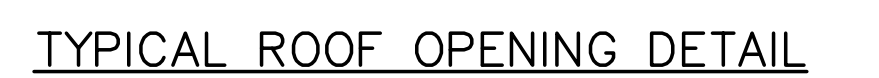
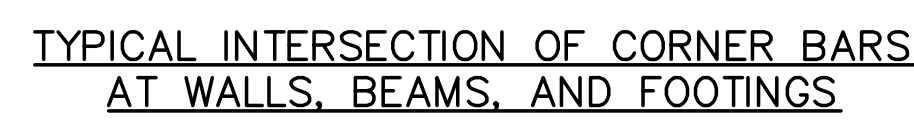
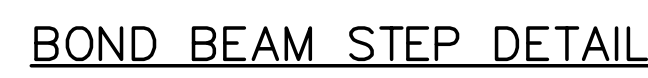
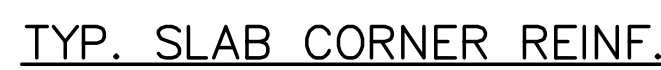
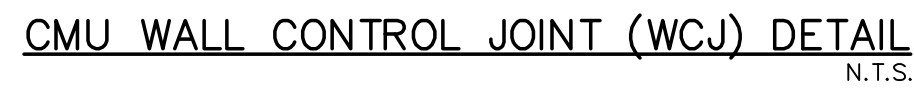
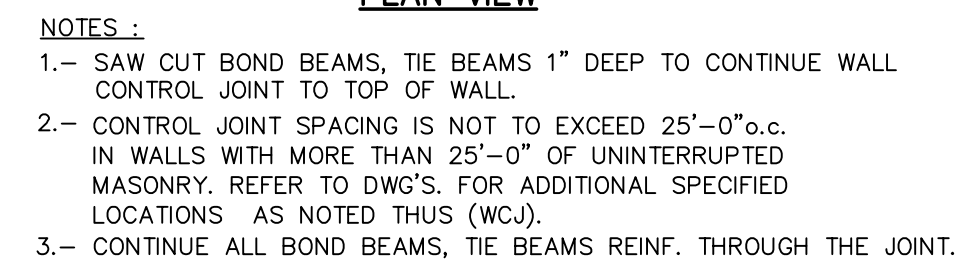
24-0919-01

SHEET TITLE

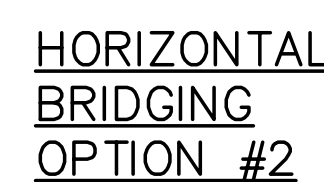
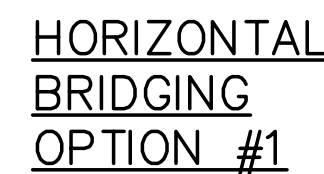
STRUCTURAL SCHEDULE

SHEET NUMBER

S0.2



CONCRETE COVER SCHEDULE



COPY OF THIS PLAN IS NOT VALID UNLESS SIGNED,
SEALED AND DATED BY THE ENGINEER OF RECORD.

PROJECT DESCRIPTION:
A NEW OFFICE BUILDING FOR
PROVIDENCE ONE PARTNERS
BUILDING - 01
1145 BUSINESS CENTER DRIVE
HEATHROW, FLORIDA. 32746

CONSTRUCTION

10.21.2025

[illegible]

PROJECT TEAM
PRINCIPAL IN CHARGE
J. GUTHERMAN
PROJECT MANAGER

CLIENT NAME

PROJECT NUMBER 24-0919-01

TYPICAL DETAILS

SHEET NUMBER

S0.3



E FOR

CONSTRUCTION

0.21.2025

PROJECT TEAM

TITLE _____


20

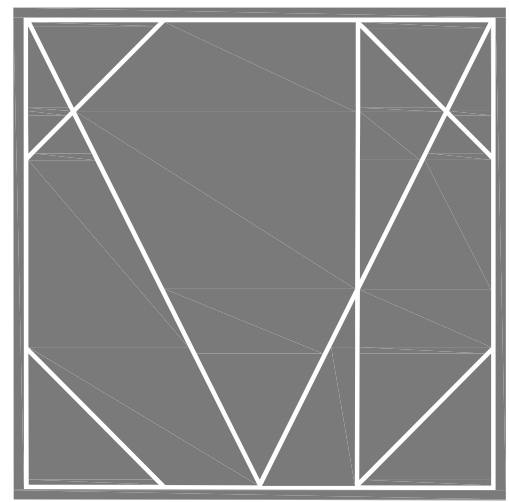


1/S2.0 FOUNDATION PLAN -BUILDING 1

SCALE: 1/4" = 1'-0"

FOUNDATION NOTES:

- | | | | |
|----|----------------------------------------------------------------------------------------------|-----|---------------------------------------------------------------------------------------------------------------------------------------------------------------------------------|
| 1. | ELEV. $\pm 0'-0"$ IS REFERENCE ONLY. SEE CIVIL FOR TRUE NAVD ELEVATION. | 8. | SC# INDICATES STEEL COLUMN. SEE SCHEDULE ON S-0. |
| 2. | VERIFY SLOPES & STEPS WITH ARCH'L PRIOR TO CONSTRUCTION. SEE TYPICAL DETAIL SHEET. | 9. | C# INDICATES CONCRETE COLUMN. SEE SCHEDULE FOR SIZE, EXTENTS, & REINFORCING. |
| 3. | TOP OF EXTERIOR WALL SPREAD FOOTING ELEVATIONS = -1'-4" BELOW TOP OF SLAB TYPICAL U.N.O.. | 10. |  DENOTES 8" CMU WALL. SEE SCHEDULE FOR REINFORCING. U.N.O. ON PLAN. |
| 4. | G.C. TO PROVIDE SLAB ON GRADE CONTROL JOINTS (C.J.) FOR ALL SLAB AT 12'-0" O.C. MAX. TYPICAL | 11. | PROVIDE WALL CONTROL JOINTS. SEE TYPICAL DETAIL SHEET. |
| 5. | TE INDICATES THICKENED EDGE SEE TYPICAL DETAIL SHEET. | 12. | SEE ARCH FOR DIMENSIONS NOT SHOWN. |
| 6. | WF## INDICATES CONCRETE FOOTING. SEE SCHEDULE FOR SIZE, EXTENTS & REINFORCING. | 13. | AT ALL LIGHT GAUGE FRAMING BUMP OUTS, EXTEND CONCRETE 8" PAST THE FACE OF LIGHT GAUGE, AND PROVIDE AN ADDITIONAL #5 AT 12" O.C. EACH WAY, LAPPED WITH MAIN FOOTING REINFORCING. |
| 7. | MW# INDICATES CONCRETE MASONRY WALL. SEE SCHEDULE FOR SIZE & REINFORCING. | | |



CAMPBELL + VAN DUSEN
ARCHITECTURE INTERIOR DESIGN
www.CVDstudio.com
CAMPBELL + VAN DUSEN Design Studio, LLC.
255 South Orange Avenue Suite #1240
Orlando, Florida 32801
Phone: 407.930.6014
FL Lic. No. AA2600339

Gutherman
STRUCTURAL
GUTHERMAN STRUCTURAL INC.
130 CROWN OAK CENTRE DRIVE
LONGWOOD, FL 32750
P: 407.951.8065
LIC. # 28863

COPY OF THE PLAN IS NOT VALID UNLESS SIGNED
SEALED AND DATED BY THE ENGINEER OF RECORD.
CONSTANT AND SCALE

PROJECT DESCRIPTION:
A NEW OFFICE BUILDING FOR
PROVIDENCE ONE PARTNERS
BUILDING - 01
1145 BUSINESS CENTER DRIVE
HEATHROW, FLORIDA, 32746

CONSTRUCTION

10.21.2025

NO.	DESCRIPTION	DATE

PROJECT TEAM
DESIGNED BY: J. GUTHERMAN
PROJECT MANAGER
J. GUTHERMAN

CUSTOMER NAME
Providence One Partners

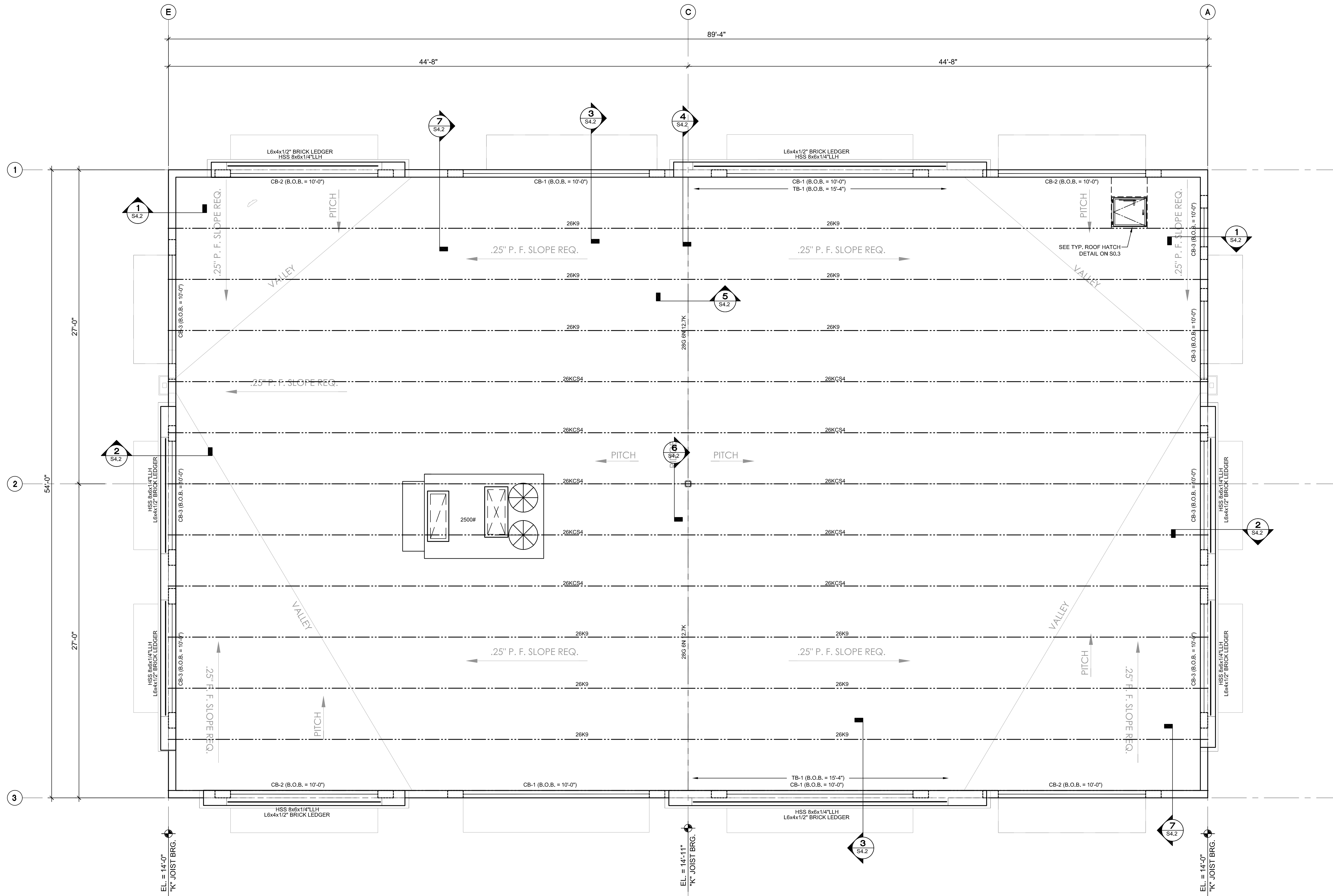
PROJECT NUMBER
24-0919-01

SHEET FILE

ROOF FRAMING PLAN
BUILDING 1

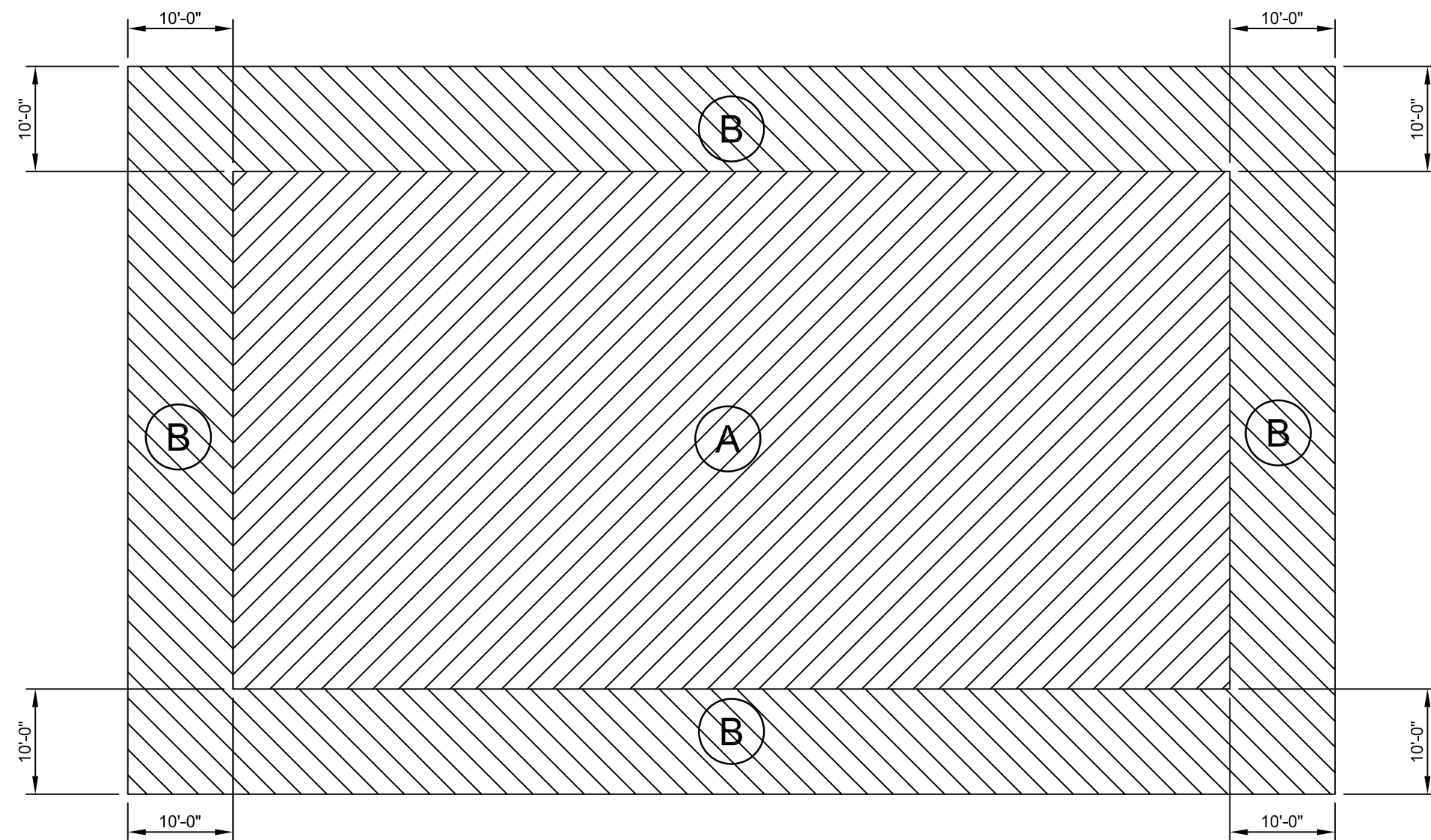
SHEET NUMBER

S3.0



1/S2.0 ROOF FRAMING PLAN -BUILDING 1

SCALE: 1/4" = 1'-0"



TYPICAL ROOF DECK CONNECTION SCHEDULE

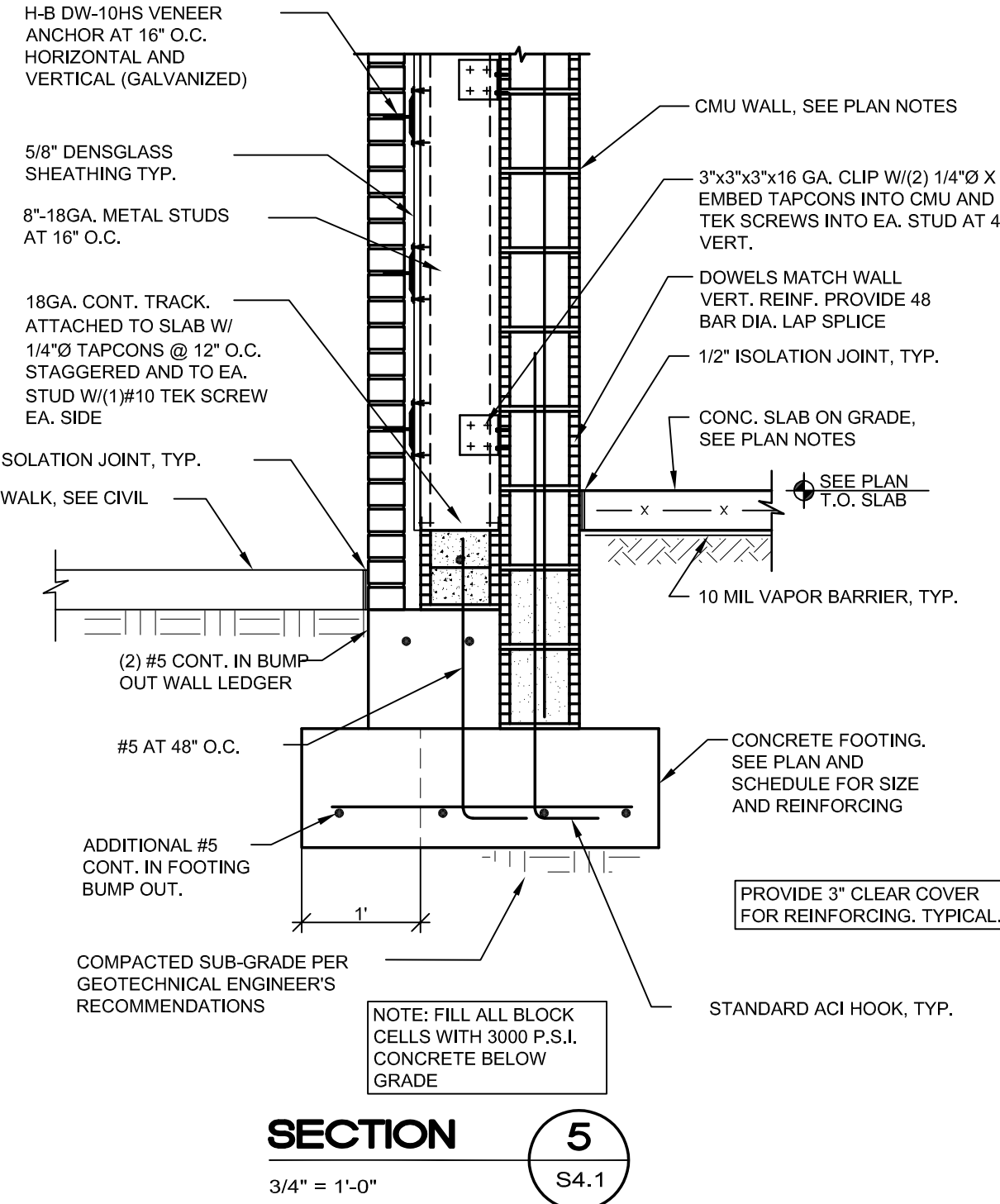
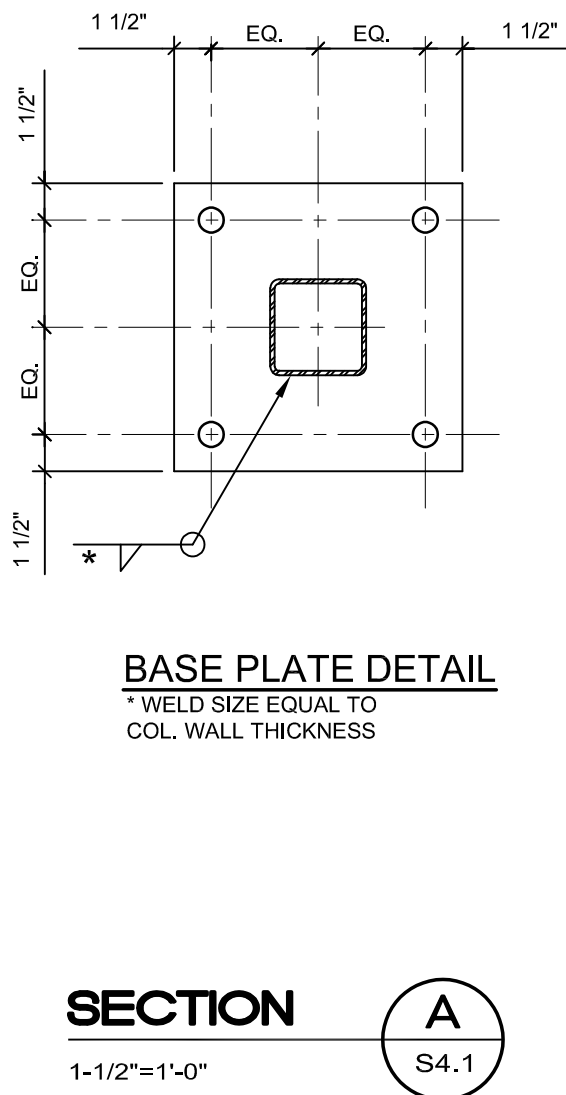
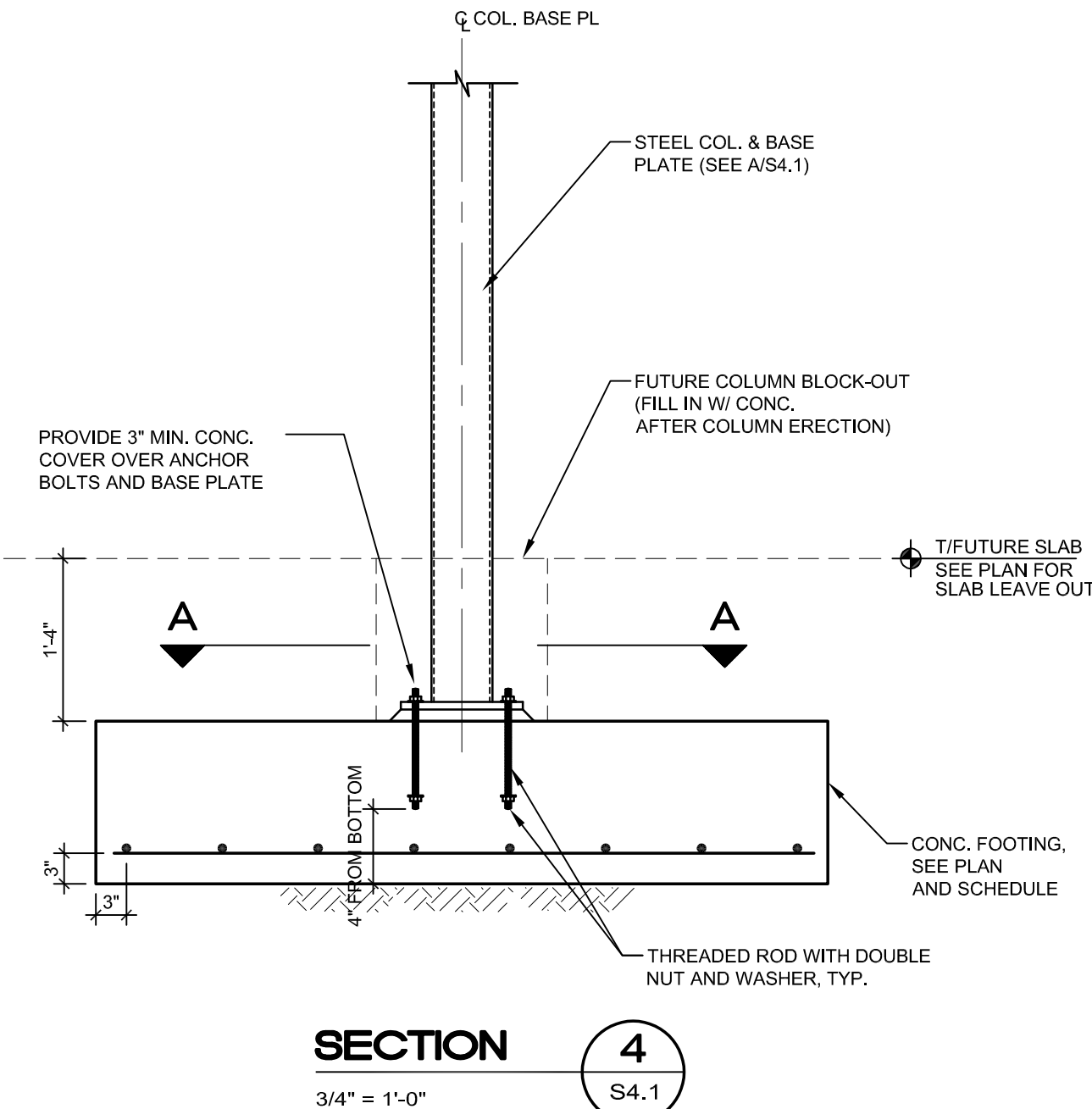
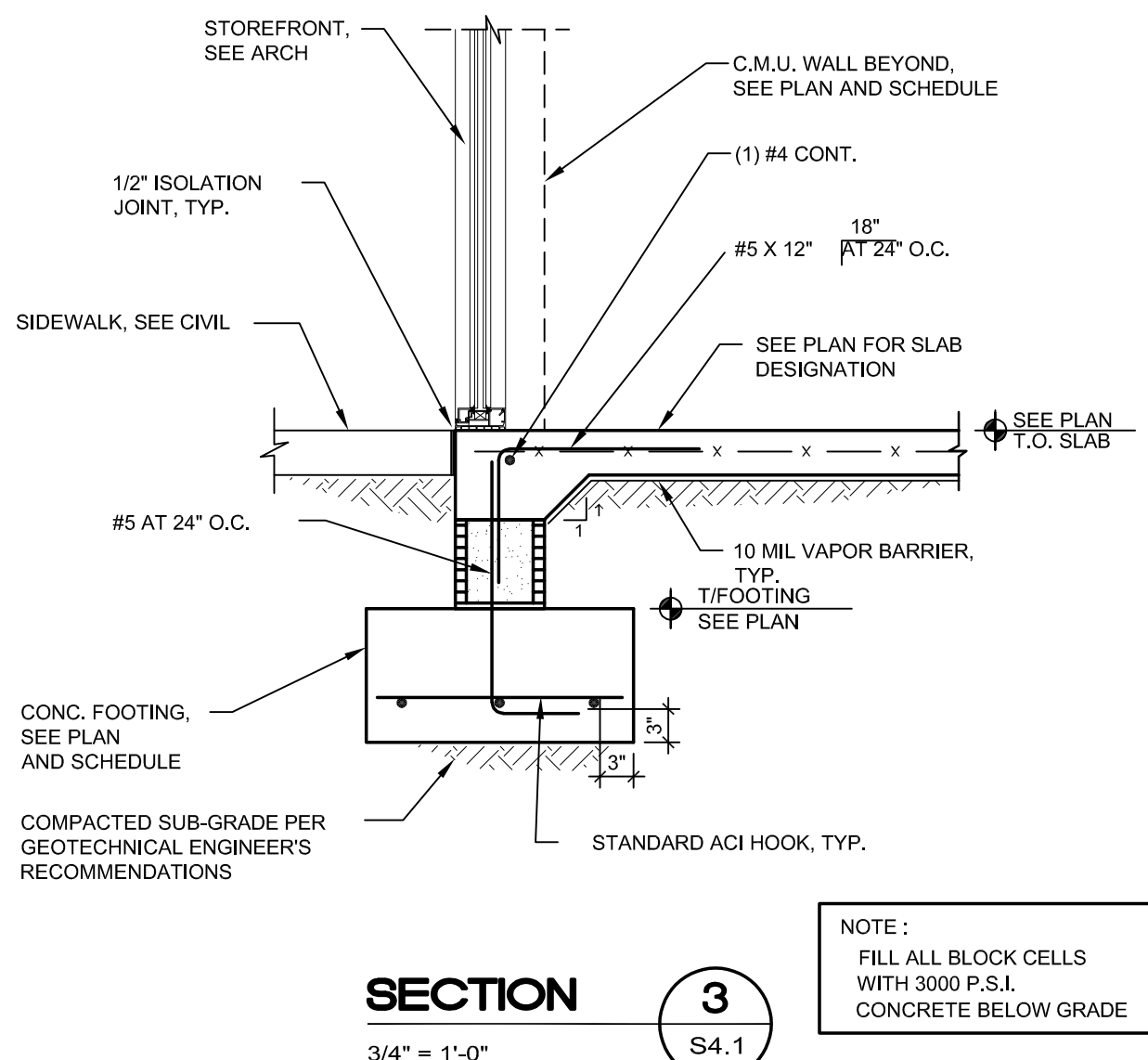
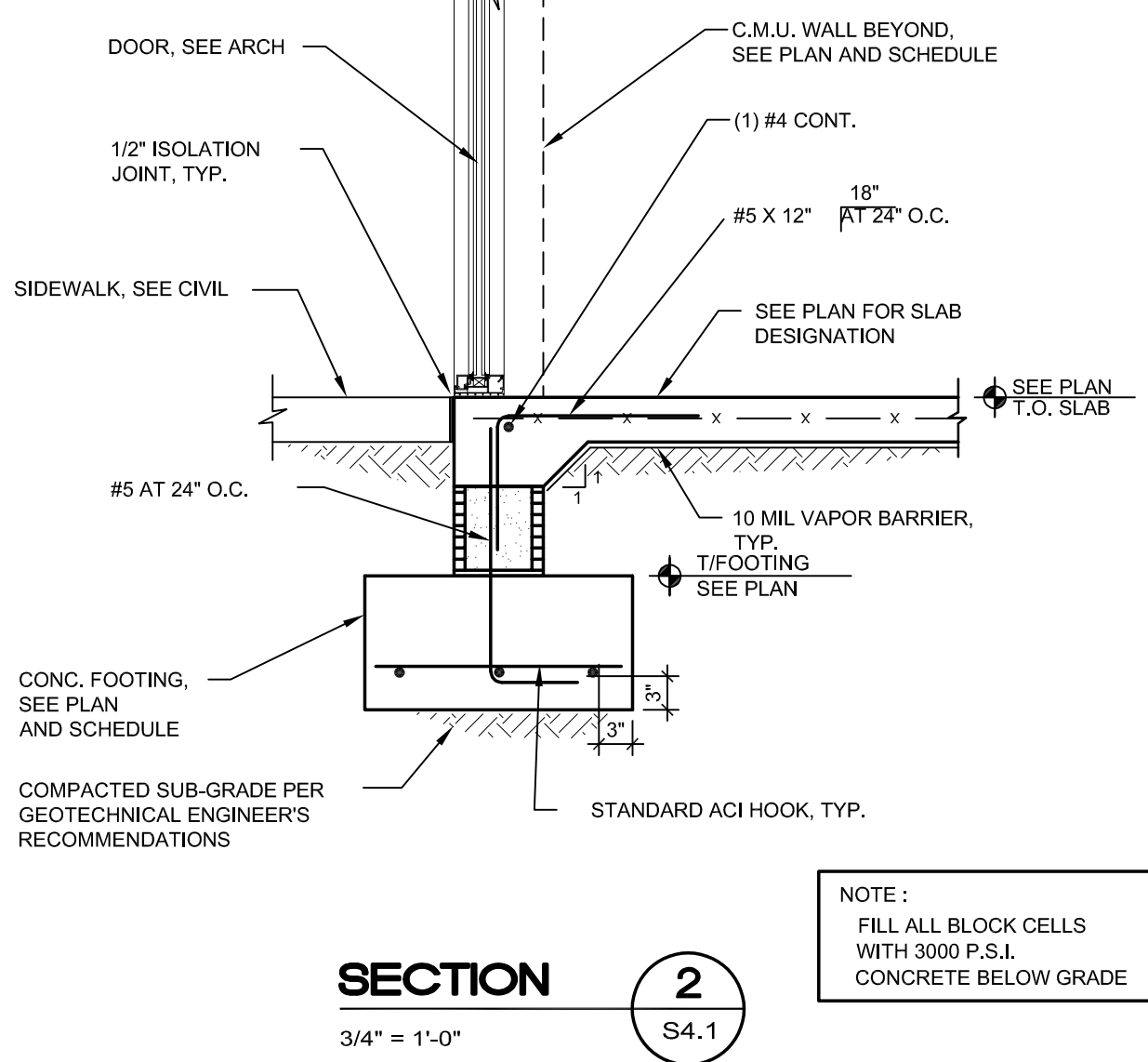
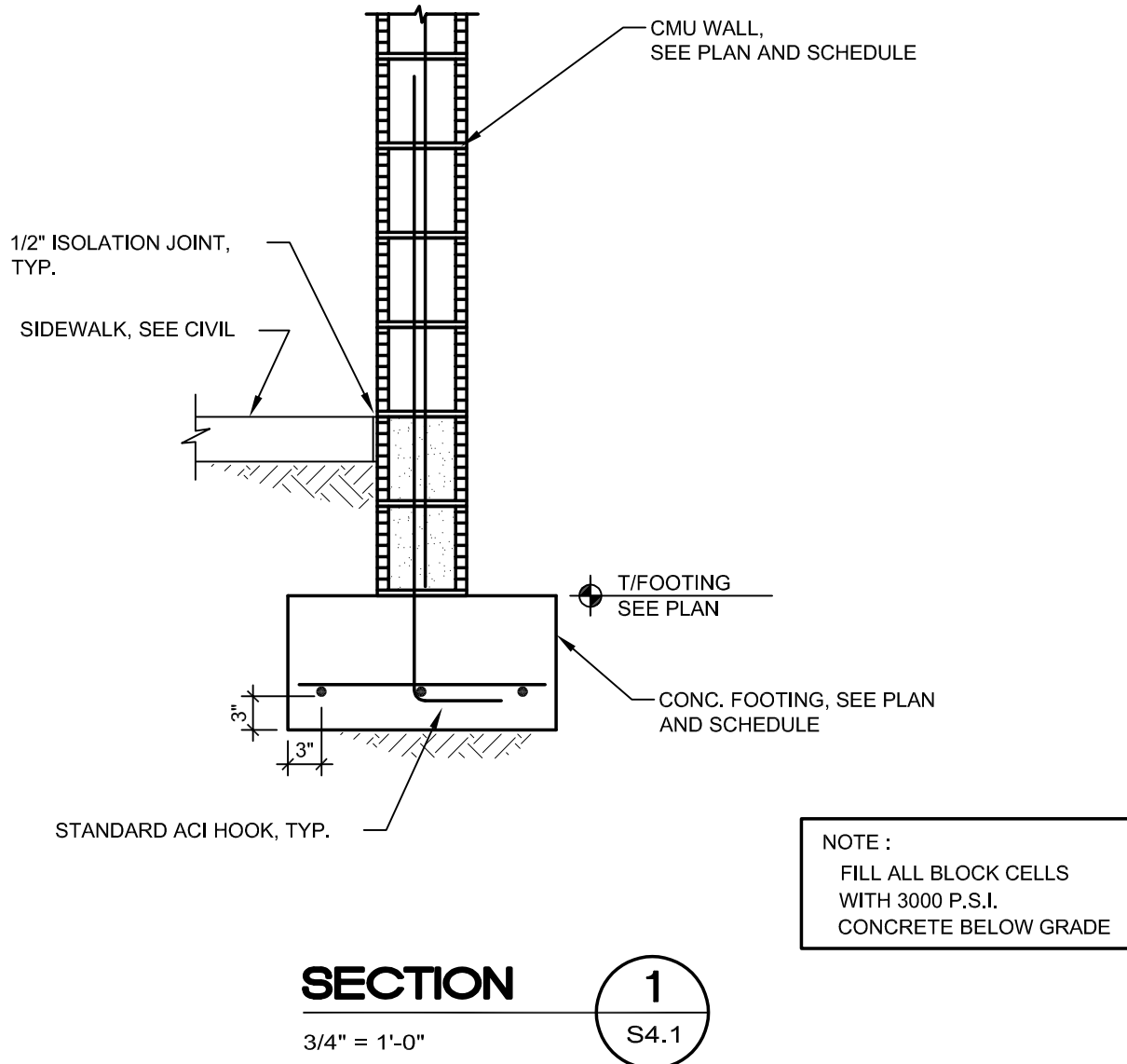
MARK	ATTACHMENT	
	DECK TO SUPPORT CONNECTION	SIDLAP CONNECTIONS
A	5/8" DIA. PUDDLE WELD AT 12" O.C. (36/4 PATTERN)	(4) #10 SCREW PER SPAN
B	5/8" DIA. PUDDLE WELD AT 6" O.C. (36/7 PATTERN)	(4) #10 SCREW PER SPAN

NOTES:

- ALL PUDDLE WELDS TO BE 5/8"Ø FUSION TYPE (JWFO).
- WELDS TO BE MADE FOLLOWING AWS D1.3 SPECIFICATIONS BY QUALIFIED WELDING OPERATORS.
- ALL DECK END LAPS TO BE A MINIMUM OF 2'.
- SEE SECTIONS & DETAILS FOR ADDITIONAL WELDS REQUIRED.
- HILTI X-ENP-19 DECK PINS MAY BE USED IN LIEU OF 5/8" PUDDLE WELDS AT THE SAME SPACING.

ROOF FRAMING NOTES:

- ALL METAL ROOF DECK SHALL BE 1.5" TYPE B 20GA TYPICAL SEE SCHEDULE & NOTES ON THIS SHEET FOR ATTACHMENT.
- L# INDICATES PRECAST LINTEL, SEE SCHEDULE FOR SIZE & REINFORCING.
- BB# INDICATES MASONRY BOND BEAM, SEE SCHEDULE FOR SIZE & REINFORCING.
- PROVIDE A 8X8 MASONRY BOND BEAM (BB1) WITH (1) #5 CONTINUOUS AT THE TOP OF ALL WALLS. PROVIDE AN 8X16 MASONRY BOND BEAM AT ALL JOIST & DECK BEARING LOCATIONS WITH (1) #5 CONTINUOUS TOP & BOTTOM, TYPICAL.
- VERIFY ALL TOP OF MASONRY WALL ELEVATIONS WITH ARCH DRAWINGS PRIOR TO FABRICATION & CONSTRUCTION, TYPICAL.
- VERIFY ALL BOTTOM OF BEAM/LINTEL ELEVATIONS WITH ARCH DRAWINGS PRIOR TO FABRICATION & CONSTRUCTION, TYPICAL.
- PROVIDE A CONTINUOUS BB1 AT 10'-8" TYPICAL.
- REFER TO ARCH'L/ MECH'L DRAWINGS FOR ROOF TOP EQUIPMENT SIZE & LOCATION, TYPICAL.
- STEP BB2 AS REQUIRED TO MATCH DECK ATTACHMENT ALONG MASONRY WALL.
- SEE ARCH. FOR DIMENSIONS NOT SHOWN, TYPICAL.
- THE G.C. SHALL VERIFY WEIGHT & LOCATION OF ALL MECH'L EQUIPMENT TO BE SUPPORTED BY ROOF STRUCTURE WITH MECH'L & EQUIPMENT SUPPLIER PRIOR TO FABRICATION & CONSTRUCTION. REPORT ANY DISCREPANCIES TO ARCHITECT & ENGINEER.
- CONCRETE COLUMNS SHALL EXTEND TO TOP OF BOND BEAMS AT ROOF DECK/JOIST BEARING HEIGHTS TYP.
- JOIST MANUFACTURER NOTE: ENGINEER HAS DESIGNED THE JOISTS FOR THE LOADS SHOWN.



PROJECT DESCRIPTION:
A NEW OFFICE BUILDING FOR
PROVIDENCE ONE PARTNERS
BUILDING - 01
1145 BUSINESS CENTER DRIVE
HEATHROW, FLORIDA. 32746

CONSTRUCTION

10.21.2025

NO.	DESCRIPTION	DATE

PROJECT TEAM:
PRINCIPAL IN CHARGE:
J. GUTHERMAN
PROJECT MANAGER:

CLIENT NAME:
Providence One Partners

PROJECT NUMBER:
24-0919-01

PROJECT FILE:

FOUNDATION SECTIONS

SHEET NUMBER:
S4.1

